

11. Weather / Time Zones



Melbourne Climate

Victoria experiences warm to hot summers, mild autumns, cool to cold winters and cool springs. The climate varies across the state, with the north experiencing much drier and warmer weather than the south. Melbourne has a mild, temperate climate with four distinct seasons.

- **Summer:** December to February
Temperatures: from 21°C to 34°C, average 28°C
- **Autumn:** March to May
Temperatures: from 11°C to 19°C, average 17°C
- **Winter:** June to August
Temperatures: from -1°C to 12°C, average 8°C
- **Spring:** September to November
Temperatures: from 10°C to 20°C, average 17°C

Summer: December to February

With average maximum temperatures of 25.5°C, a typical summer days in Melbourne is warm and sunny, with a freshening sea breeze from the south to southeast in the afternoon. A hot summer spell can produce temperatures that exceed 40°C, but this usually ends with a cool change.

Autumn: March to May

With temperatures falling to around 20°C, Autumn is generally considered the most pleasant season in Melbourne. Many days are mild and sunny with afternoon sea breezes. Cloudy, showery weather increases towards the end of autumn.

Winter: June to August

Melbourne experiences some of Australia's coldest weather in winter, with some nights producing frost. Snow doesn't fall in the city itself, but occasionally the outlying hills receive a light snowfall. The average daily temperature is approximately 14°C, although it can fall below 4°C. In the alpine region, average temperatures range from -5 to 5°C.

Spring: September to November

At the beginning of spring, cloudy overcast days with gusty winds can be experienced, with an average of 5.8 hours of sunshine a day. The weather begins to warm up towards the end of spring. Sometimes a full range of weather can be experienced in a matter of days.



Time Zones and Daylight Saving

Australia has three standard time zones. Victoria operates on Australian Eastern Standard Time (AEST). Melbourne is 10 hours in front of Greenwich Mean Time (GMT) without daylight saving. The Australian time zones are:

References:

Live in Victoria - <http://www.liveinvictoria.vic.gov.au/ViewPage.action?siteNodId=27&languageId=1&contentId=-1>
Weather - <http://www.weather.com.au/vic/melbourne>

EST: Eastern Standard Time

Victoria, Tasmania, New South Wales, Australian Capital Territory and Queensland.

CST: Central Standard Time

South Australia and the Northern Territory.

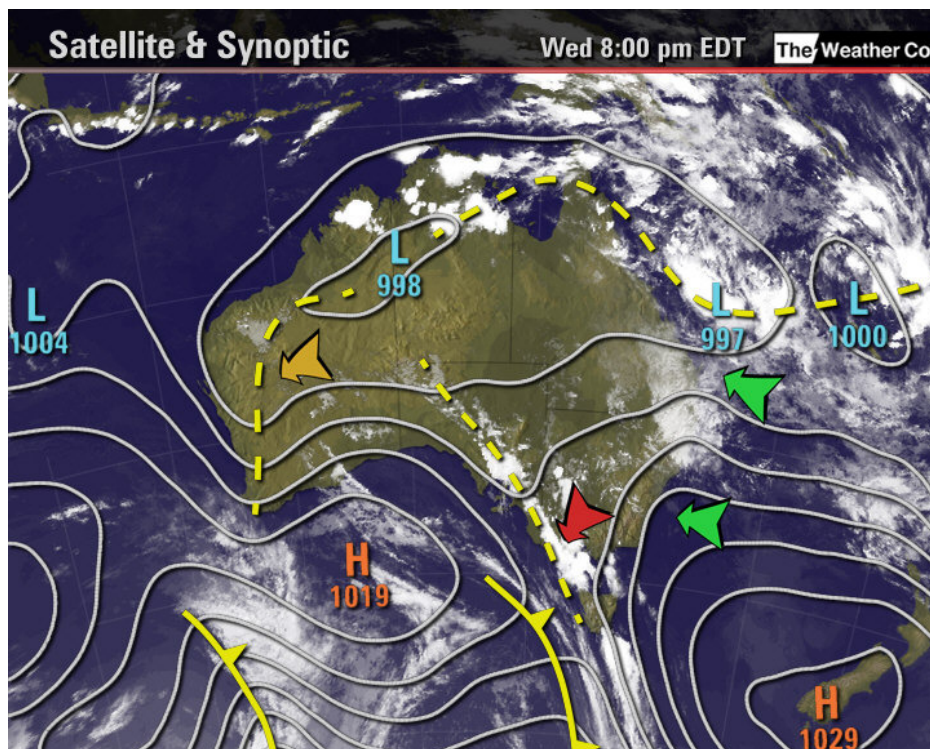
WST: Western Standard Time

Western Australia.

Time zones around the world are published in the [White Pages telephone directory](#).

Daylight saving

Throughout the summer months, Victoria - along with some other Australian states - adopts 'daylight saving' time. Daylight saving time is also known as Australian Eastern Daylight Time (AEDT) and occurs when the local clock is moved forward one hour to gain an 'extra hour' of daylight at the end of the working day.



References:

- Live in Victoria - <http://www.liveinvictoria.vic.gov.au/ViewPage.action?siteNodeId=27&languageId=1&contentId=-1>
- Weather - <http://www.weather.com.au/vic/melbourne>